

Google Chrome, Firefox Connection Operation

Manual

Using browsers would be more convenient to connect with software cloud instead of installing “View Client Program”, but

the followings would not be supported by using browsers:

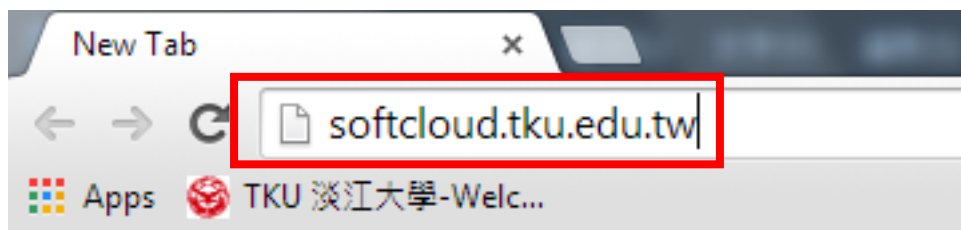
- (1) Local printer connection**
- (2) USB devices such as disk drives or card reader.**
- (3) Copying and pasting files (only available for character)**

1. Please go to [TKU software cloud website](#) and click “使用申請” to register the services. The service will be available when the notification has been received. (The process would take around 30 minutes).

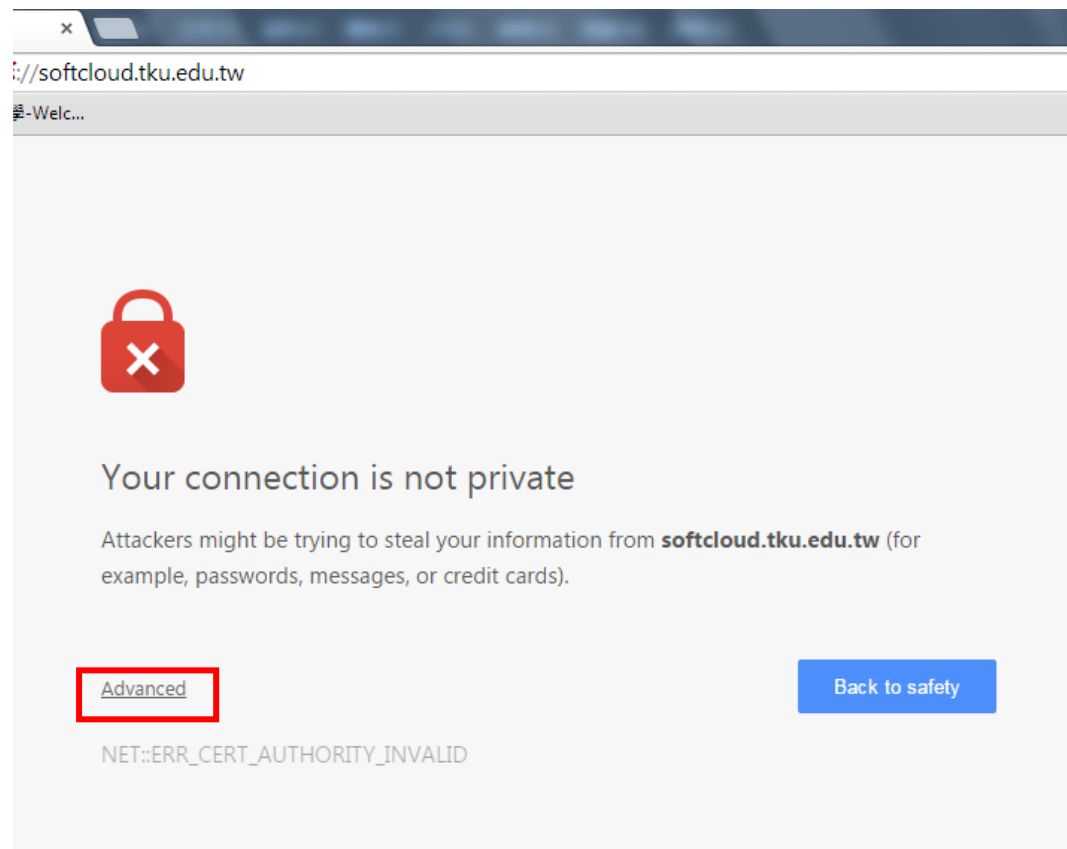
2. Operating illustration

Google Chrome operating illustration:

(1) Open Google Chrome, insert “softcloud.tku.edu.tw” in address bar and press Enter.

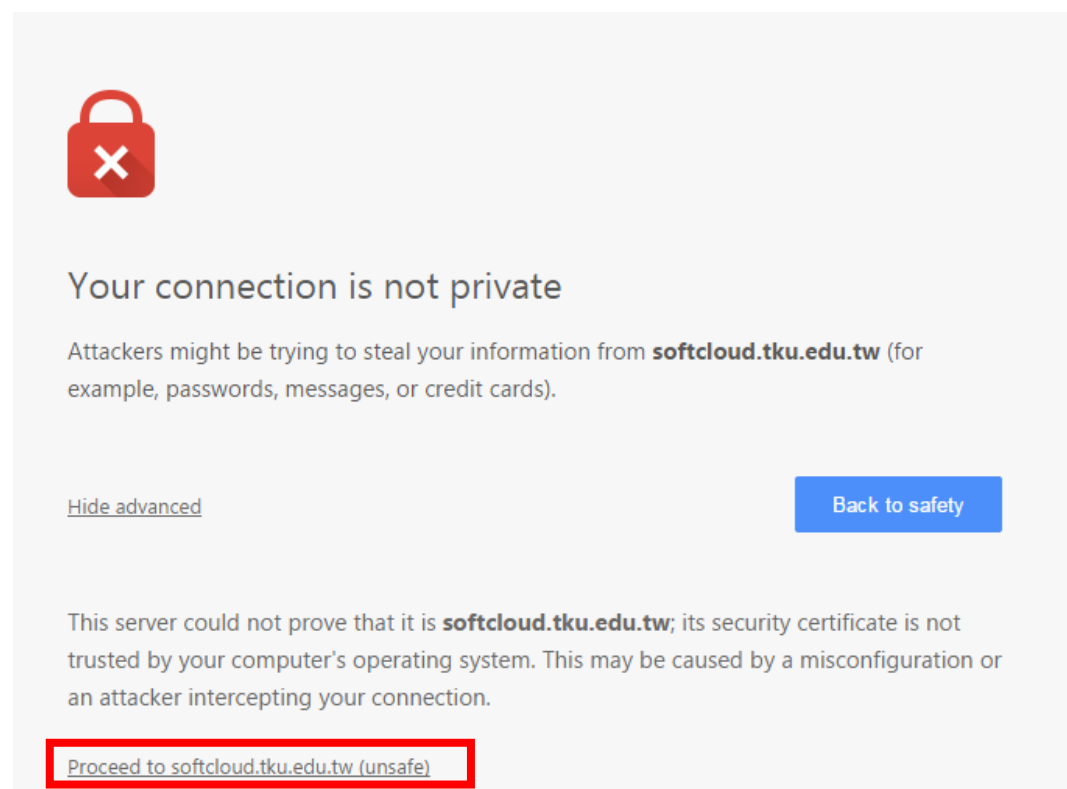


(2) Click “Advanced”.



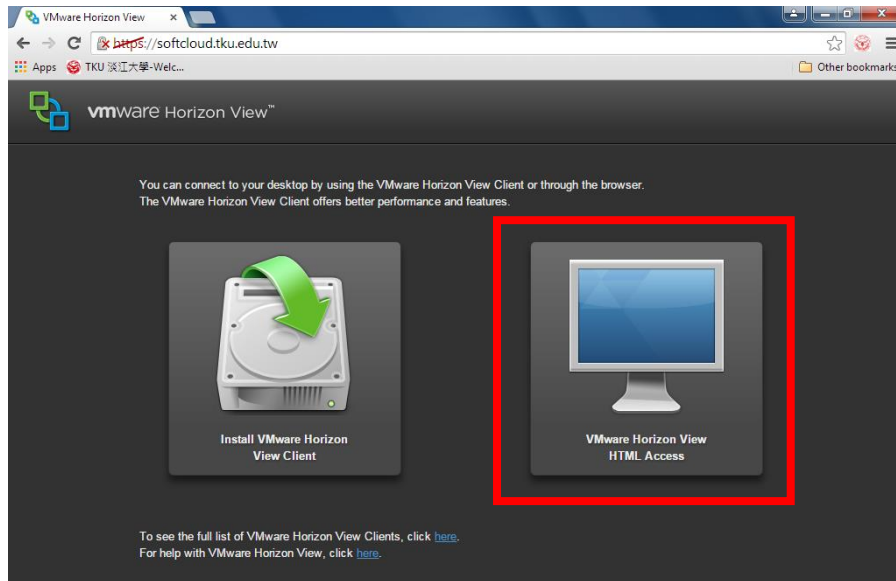
A screenshot of a web browser showing a security warning. The address bar displays `://softcloud.tku.edu.tw`. The page title is partially visible as `-Welc...`. The main content area features a red padlock icon with a white 'X' inside. Below the icon, the text reads: "Your connection is not private". A subtext explains: "Attackers might be trying to steal your information from **softcloud.tku.edu.tw** (for example, passwords, messages, or credit cards)." At the bottom, there are two buttons: "Advanced" (highlighted with a red box) and "Back to safety". Below the buttons, the error code `NET::ERR_CERT_AUTHORITY_INVALID` is displayed.

(3) Click “Proceed to softcloud.tku.edu.tw (unsafe)”



A screenshot of a web browser showing a security warning with advanced details. The address bar displays `://softcloud.tku.edu.tw`. The page title is partially visible as `-Welc...`. The main content area features a red padlock icon with a white 'X' inside. Below the icon, the text reads: "Your connection is not private". A subtext explains: "Attackers might be trying to steal your information from **softcloud.tku.edu.tw** (for example, passwords, messages, or credit cards)." At the bottom, there are two buttons: "Hide advanced" and "Back to safety". Below the buttons, a detailed message states: "This server could not prove that it is **softcloud.tku.edu.tw**; its security certificate is not trusted by your computer's operating system. This may be caused by a misconfiguration or an attacker intercepting your connection." At the very bottom, a button labeled "Proceed to softcloud.tku.edu.tw (unsafe)" is highlighted with a red box.

(4) Click “VMware Horizon View HTML Access”

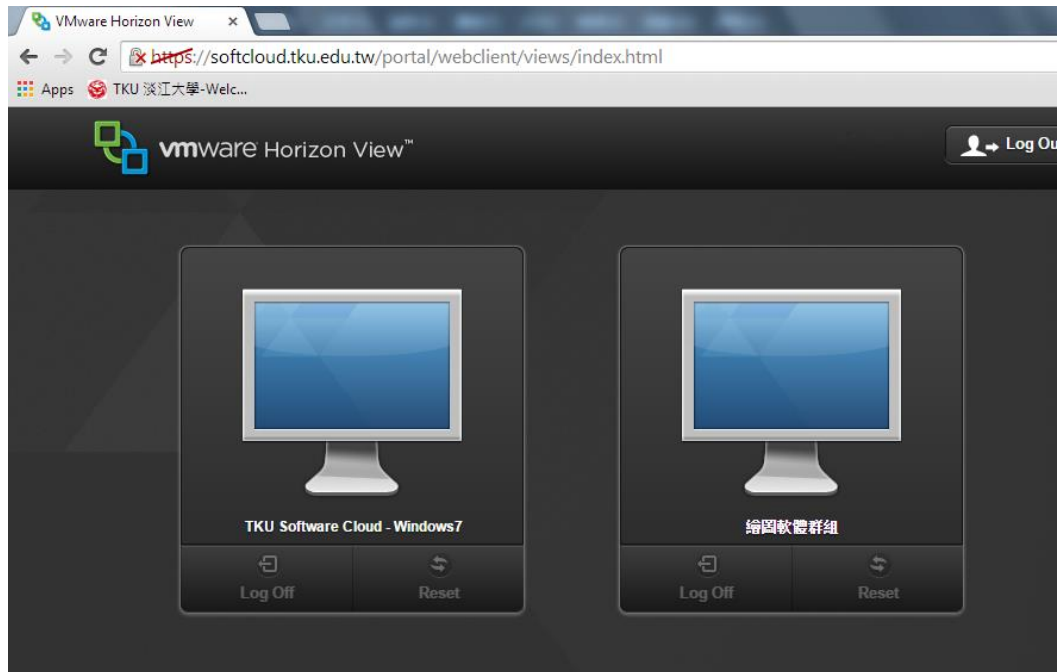


(5) Insert your ID and password.

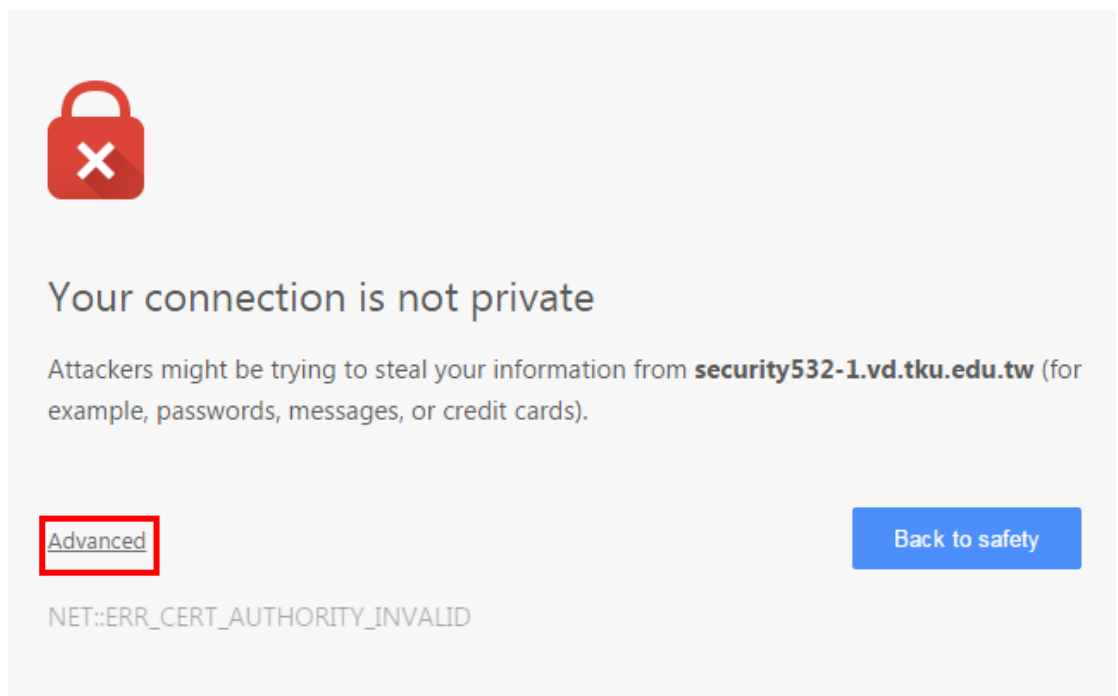
Note: The ID would be your student number or staff number, and the code would be single entry password (The default password would be the last six digits of your ARC/passport number).

A screenshot of the VMware Horizon View Log In dialog box. The dialog has a blue header with the text 'Log In'. Below the header, there are three input fields: 'Username', 'Password', and 'Domain'. The 'Username' and 'Password' fields are highlighted with red rectangular borders. The 'Domain' field is a dropdown menu with 'VD' selected. At the bottom of the dialog, there are two buttons: 'Cancel' and 'Log In'.

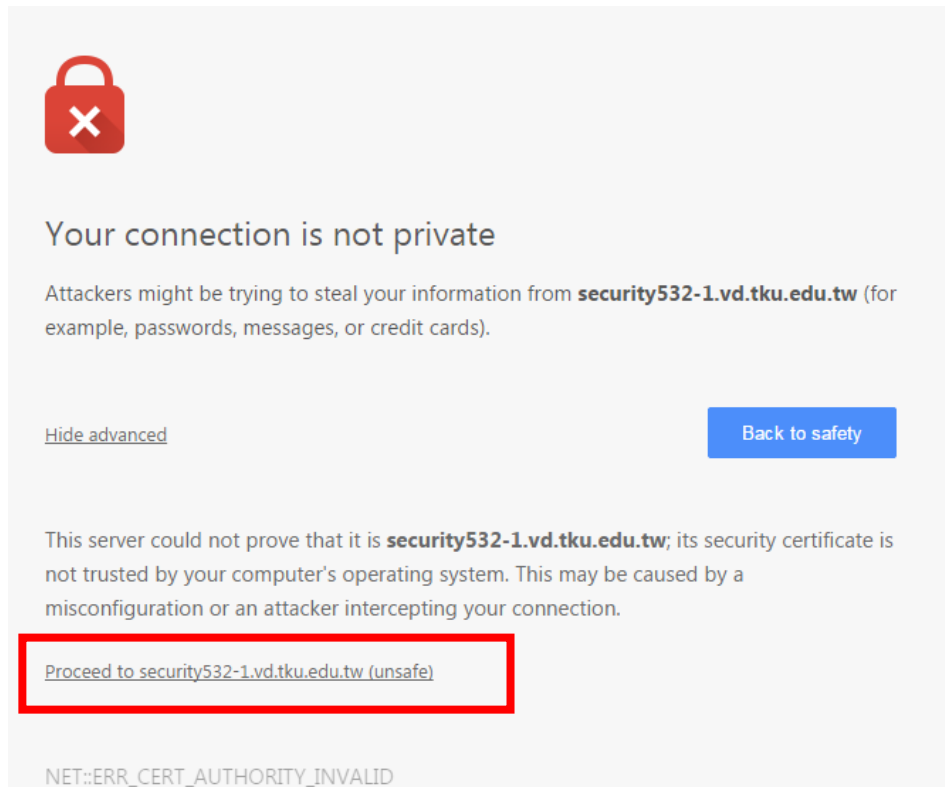
- (6) Two pictures will show up after logging in choose the one you need.



- (7) Click “Advanced” after log in.



- (8) Click “Proceed to security532-1.vd.tku.edu.tw (unsafe)”



- (9) Log in completed. Click the little arrow above and you will be able to use the task bar.

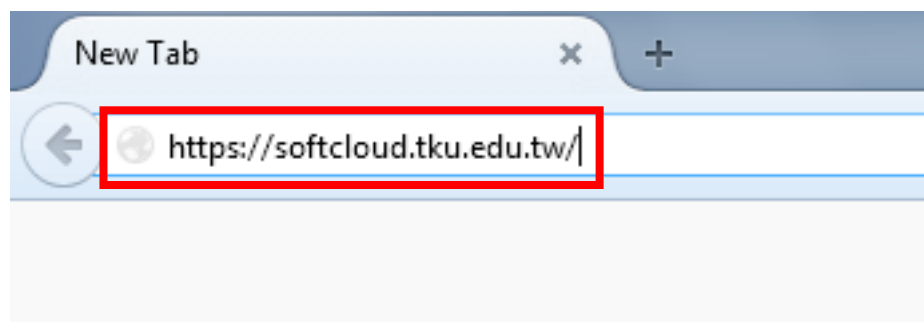


- (10) Drag down the menu on the upper right corner and choose “Paste Text”, “Toggle Full Screen” or “Disconnect”.

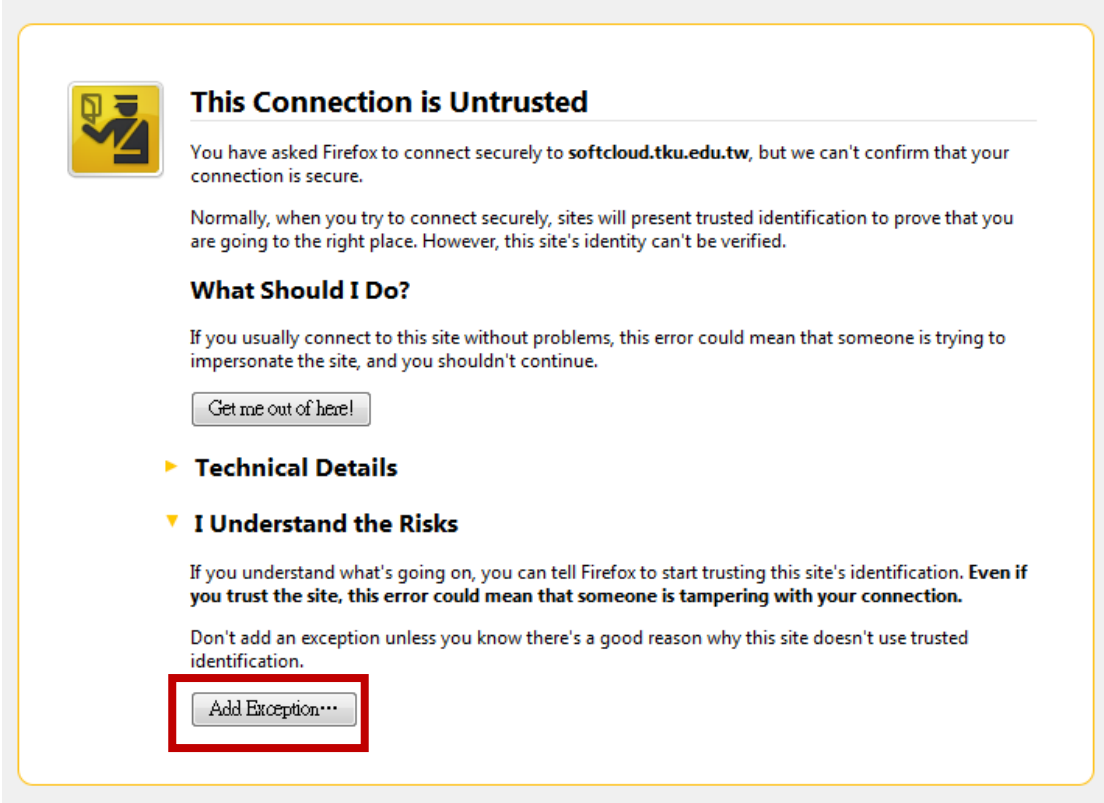


Firefox operating illustration:

- (1) Open Firefox, insert “softcloud.tku.edu.tw” and press Enter.



(2) Click “Add Exception...” after logging in.



This Connection is Untrusted

You have asked Firefox to connect securely to **softcloud.tku.edu.tw**, but we can't confirm that your connection is secure.

Normally, when you try to connect securely, sites will present trusted identification to prove that you are going to the right place. However, this site's identity can't be verified.

What Should I Do?

If you usually connect to this site without problems, this error could mean that someone is trying to impersonate the site, and you shouldn't continue.

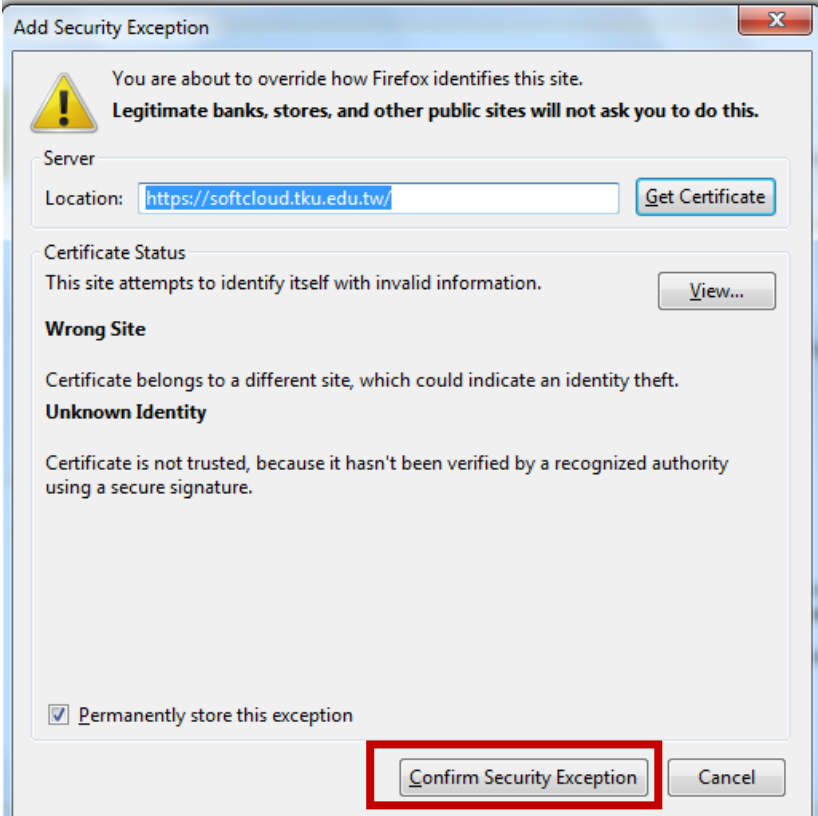
▶ **Technical Details**

▼ **I Understand the Risks**

If you understand what's going on, you can tell Firefox to start trusting this site's identification. **Even if you trust the site, this error could mean that someone is tampering with your connection.**

Don't add an exception unless you know there's a good reason why this site doesn't use trusted identification.

(3) Click “Confirm Security Exception” below.



Add Security Exception

! You are about to override how Firefox identifies this site.
Legitimate banks, stores, and other public sites will not ask you to do this.

Server

Location:

Certificate Status

This site attempts to identify itself with invalid information.

Wrong Site

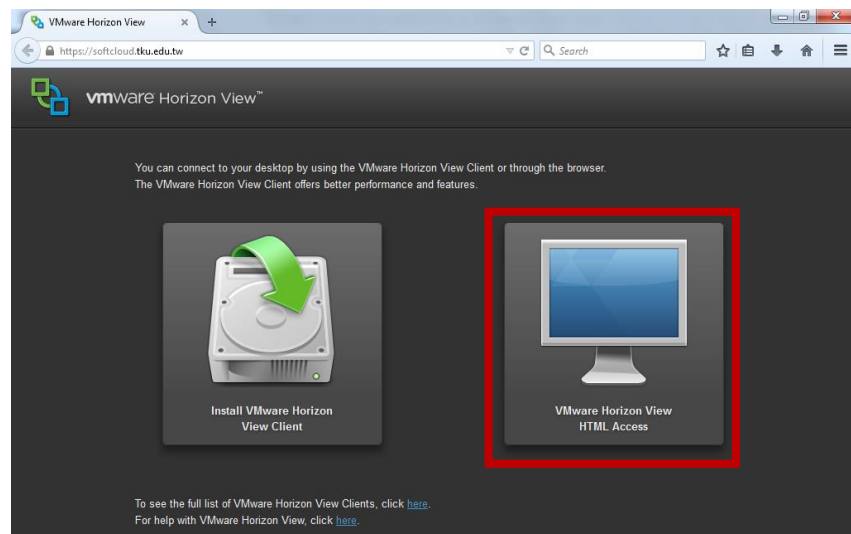
Certificate belongs to a different site, which could indicate an identity theft.

Unknown Identity

Certificate is not trusted, because it hasn't been verified by a recognized authority using a secure signature.

Permanently store this exception

(4) Click “VMware Horizon View HTML Access” on the



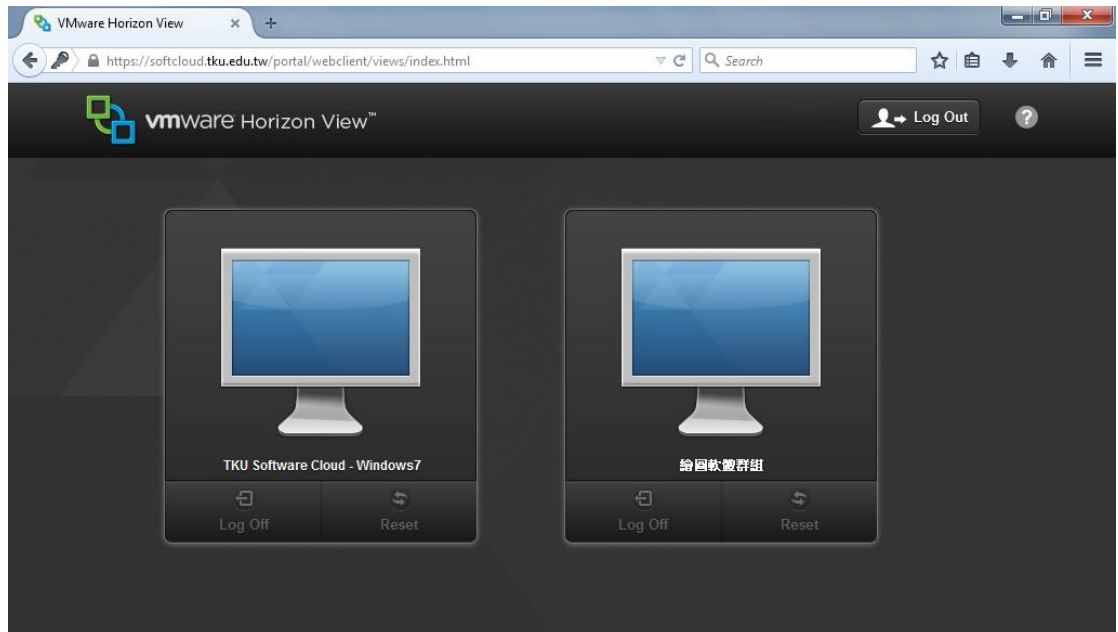
right.

(5) Insert your ID and password.

Note: The ID would be your student number or staff number, and the code would be single entry password (The default password would be the last six digits of your ARC/passport number).

A screenshot of the VMware Horizon View Log In dialog box. The dialog has a blue header with the text 'Log In'. Below the header, there are three input fields: 'Username', 'Password', and 'Domain'. The 'Username' and 'Password' fields are highlighted with red rectangular borders. The 'Domain' field is a dropdown menu with 'VD' selected. At the bottom of the dialog, there are two buttons: 'Cancel' and 'Log In'. The 'Log In' button is highlighted with a red rectangular border.

(6) Two pictures will show up after logging in choose the one you need.



(7) Log in completed. Click the little arrow above and you will be able to use the task bar.



- (8) Drag down the menu on the upper right corner and choose “Paste Text”, “Toggle Full Screen” or “Disconnect”.

